



Title of paper

Author I (Firstname SURNAME)^{*a}, Author II (Firstname SURNAME)^b,
Author III (Firstname SURNAME)^c

^a author's affiliation (University, Faculty, Department, City, Country)

^b author's affiliation (University, Faculty, Department, City, Country)

^{c*} corresponding author's affiliation and E-mail (University, Faculty, Department, City, Country, Email)

Abstract

The main text of full paper should be followed the keywords by one blank line. Standard size of paper (A4 format) with typeface Times New Roman, type size 10 pt, single-space lines. Scientific papers and review articles could be 3-5 standard pages, without any page numbers, Header and footer. The main text should be prepared single-column. Latin names should be referred to footnotes by numbers on top- left. If references are made in the text listed in Literature Cited, refer to them by Author *et al* (Year). Manuscripts in a MS Word format (.doc or .docx), should be submitted along with a submission form through our website as the form of attached file.

Keywords: word1, word2, word3, word4, word5

1. Introduction

The introduction should outline the necessary background information, why the research was conducted, the goal of author and a brief review of previous publications consisting of refereed periodicals, journals and books for the work presented should be cited.

2. Material and Methods

In the Materials and Methods section, the experimental procedures and statistical method should be described in sufficient detail. Commonly known methods or analyses may be briefly explained by citing relevant references.

3. Results and Discussion

The Results and Discussion section should contain the brief results of research and explain the conclusions with tables and figures as needed and a discussion of any inconsistency of already published reports.

3.1. Tables

All tables should be numbered with Arabic numerals. Headings should be placed above tables, left justified. Leave one-line space between the heading and the table. Only horizontal lines should be used within a table, to distinguish the column headings from the body of the table, and immediately above and below the table. Tables must be embedded into the text and not supplied separately. Below is an example which authors may find useful.

Table 1. An example of a table

An example of a column heading	Column A (<i>t</i>)	Column B (<i>T</i>)
And an entry	1	2
And another entry	3	4
And another entry	5	6

All figures should be numbered with Arabic numerals (1, 2, n). All photographs, schemas, graphs and diagrams are to be referred to as figures. Line drawings should be good quality scans or true electronic output. Low-quality scans

are not acceptable. Figures must be embedded into the text and not supplied separately. Lettering and symbols should be clearly defined either in the caption or in a legend provided as part of the figure. Figures should be placed at the top or bottom of a page wherever possible, as close as possible to the first reference to them in the paper. The figure number and caption should be typed below the illustration in 8pt and centered. However, if two images fit next to each other, these may be placed next to each other to save space, see Fig 1. They must be numbered consecutively, all figures, and all tables respectively.

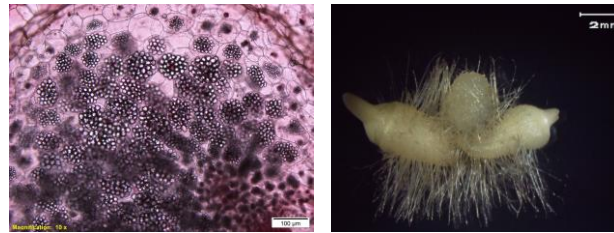


Fig. 1. (a) first picture; (b) second picture

Equations and formulae should be typed and numbered consecutively with Arabic numerals in parentheses on the right hand side of the page (if referred to explicitly in the text),

$$\oint_S \mathbf{B} \cdot d\mathbf{S} = 0$$

(1)

They should also be separated from the surrounding text by one space.

Acknowledgements

These and the Reference headings are in bold but have no numbers. Text below continues as normal.

References The surnames and initials of all authors should be followed by the year of publication cited, the original title of the paper, the name of the periodical, the relevant volume and page number. In the case of a book or proceedings the title should be followed by the name of the publisher and the place of publication. Names of authors should be separated by commas, not by & or and. The style format is Author-Date. Example of references in the list:

Yin, X., and van Laar, H. H., (2005). Crop Systems Dynamics: An ecophysiological model for genotype-by environment interactions. Wageningen Academic Publishers, Wageningen, The Netherlands, p. 168.